



MHG*ARCLIB Help Table of Contents

Introduction

Main screen components:

How To:

(OR How to start these processes)

Update a library entry's information

Change your archiver utility

Change MHG*ARCLIB's configuration

Create a new archive

Extract or view the contents of an archive

Add entries to the library

Register MHG*ARCLIB

Change the library sort order or index

Search for entries in the library

Process an archive on any drive

Archive Library Database					
Filename	Where Located	Date	Size	Time	↑
JORDAN.ZIP	C:\WORDPRO\WORK	1990-05-09	15680	9:45p	
MHG00010.ZIP	E:\MHGARLIB	1993-05-28	712926	6:28a	
PAK.ZIP	C:\UTILITY\ZIP\PAK	1992-07-09	94635	6:19a	↓

1 →

Library Order	FileName/Date	Volumes: 2 Files: 98
---------------	---------------	----------------------

The library database entries (1) can be accessed with these controls.

Use Extract/View (2) to look inside the hi-lited library entry.

Use Library Re-Order (3) to change the sequence of the library entries.

You can move up and down the list with the arrow keys Pg-Up and Pg-Dn as well as the 4 'paging' buttons shown (4)

Search for a library entry with (5)

Delete the hi-lited entry with (6)

ZIP Processes

Using PKZIP.EXE

2 → Extract / View

Access ANY File

3 → Library Re-Order

4

Library Processes

ADD new entries

5 → FIND an entry

6 → DELETE an entry

First Record

Last Record

Page Up

Page Down

[Additional Help on How to:](#)

- [Update a library entry's information](#)
- [Change your archiver utility](#)
- [Change MHG*ARCLIB's configuration](#)
- [Create a new archive](#)
- [Extract or view the contents of an archive](#)
- [Add entries to the library](#)
- [Register MHG*ARCLIB](#)
- [Change the library sort order or index](#)
- [Search for entries in the library](#)
- [Process an archive on any drive](#)

MHG*ARCLIB Help - How To...

One of things that I find is missing from most shareware help is a series of topics on **how to** do things. What follows is a list of the **How To's** for MHG*ARCLIB .

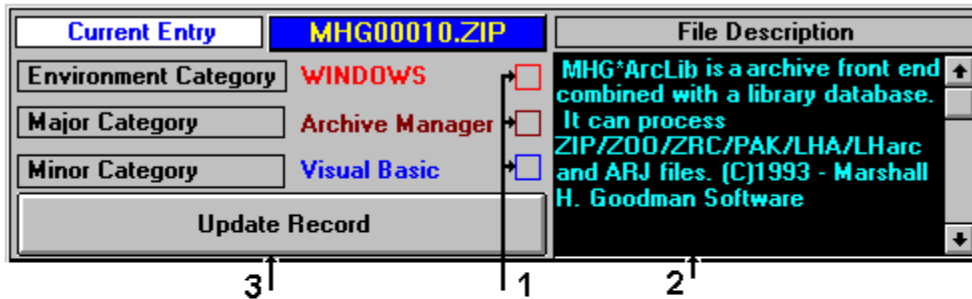
How to:
processes)

(OR How to start these

- Update a library entry's information
- Change your archiver utility
- Change MHG*ARCLIB's configuration
- Create a new archive
- Extract or view the contents of an archive
- Add entries to the library
- Register MHG*ARCLIB
- Change the library sort order or index
- Search for entries in the library
- Process an archive on any drive

How to update an entry's details

With this panel, you can change the file description for a library entry as well as assign 'categories' to it. You should assign category information to make it easier to group similar types of entries together.



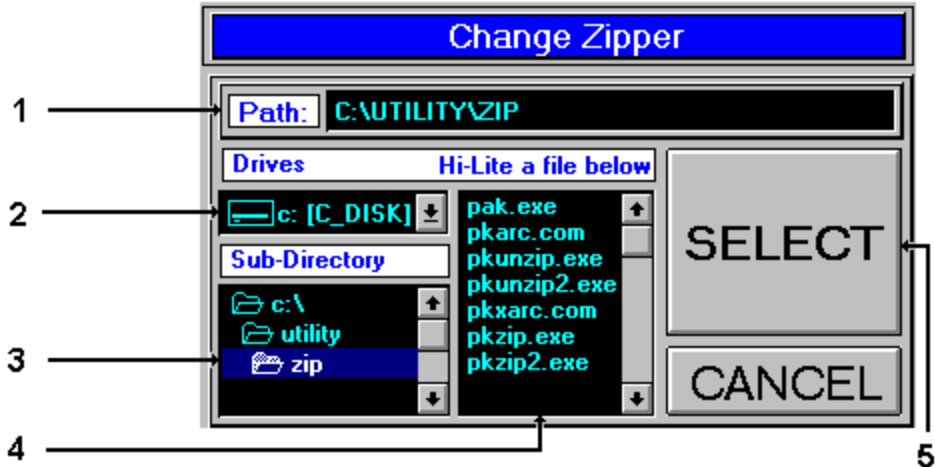
- 1) Click on the check box to change the 'environment', 'major' or 'minor' category and a pull-down list of available choices will appear
- 2) Move the mouse pointer into the 'file description' area and you can change the descriptive entry for the library entry
- 3) After you have made your changes, press the 'update record' button to make the changes permanent

Additional Help:

[Main Screen](#)

How to change the default archive utility

With this panel, you can change the archive utility that MHG*ARCLIB will use for extracting, viewing or creating an archive. If you are running a shareware version of MHG*ARCLIB, you will only be able assign PKZip (versions 1.10 and 2.04). Registration enables the use of other archiver programs.



- 1) You can enter the drive and sub-directory path followed by the archiver or
- 2) Click on the drive where the archive utility program is stored
- 3) Change the sub-directory path to the one where the archiver is
- 4) Hi-lite the archiver program
- 5) Click on the 'Select' button to change the archiver

Additional Help:

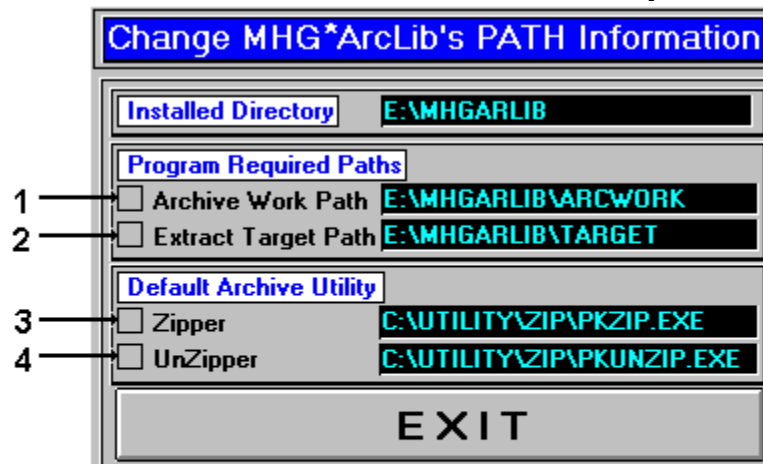
[How to create a new archive](#)

[How to extract or view the contents of an archive](#)

[How to change MHG*ARCLIB's configuration](#)

How to change the default sub-directory paths

With this panel, you can change the default paths that MHG*ARCLIB will use for locating working directories, as well as the default archiver utility.



- 1) Change the working directory by clicking on this checkbox
- 2) Change the 'target' directory (where all extracted files end up)
- 3) Change the default archive utility used to create archives
- 4) Change the default archive utility used to extract files from archives

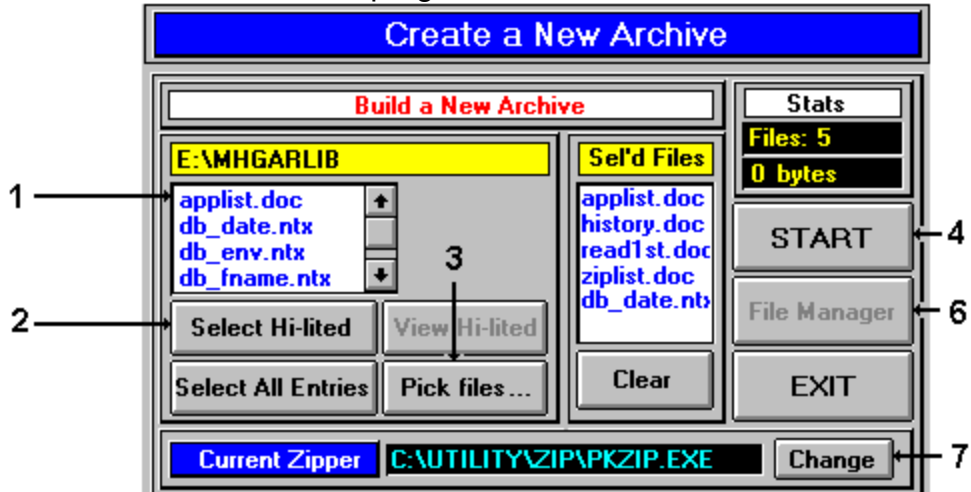
Additional Help:

[How to change your archiver utility](#)

[How to start changing the configuration](#)

How to create a new archive

With this panel, you can collect files from different sub-directories and create a new archive. If you are running a shareware version of MHG*ARCLIB, you will only be able use PKZip (versions 1.10 and 2.04). Registration enables the use of other archiver programs.



- 1) Click on the file you want to add to a new archive (or double-click the entry)
- 2) Or press the 'Select Hi-lited' button to select a file to add to a new archive
- 3) To select files from other directories, click on the 'Pick files..' button
- 4) The 'Start' button starts the create process
- 5) To delete a single entry in the 'selected' list, click on it then press Ctrl-D
- 6) Once the file has been created, you can start Windows File Manager
- 7) Change your archiver utility

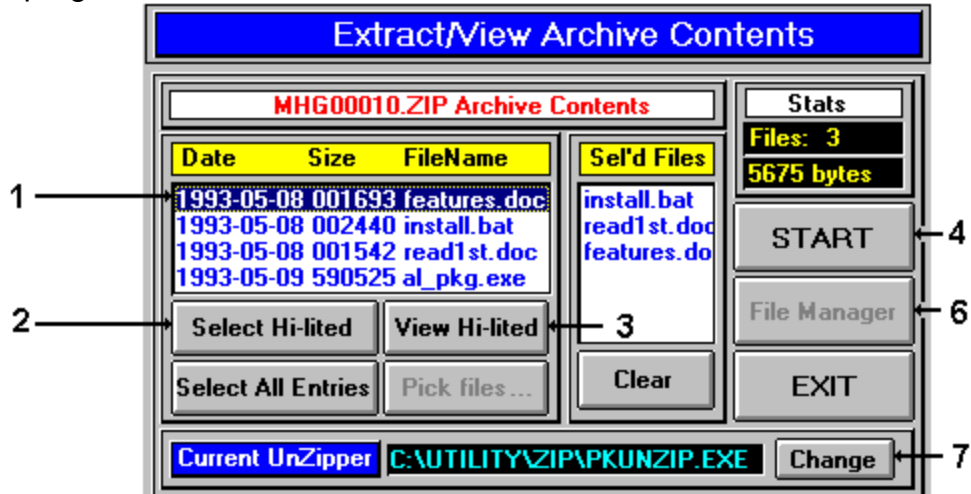
Additional Help:

[How to start creating a new archive](#)

[How to extract or view the contents of an archive](#)

How to extract or view the contents of an archive

With this panel, you can process (view or extract) the contents of an archive file. If you are running a shareware version of MHG*ARCLIB, you will only be able use PKZip (versions 1.10 and 2.04). Registration enables the use of other archiver programs.



- 1) Click on the file you want to extract or view (or double-click the entry)
- 2) To select a file for extract, press the 'Select Hi-lited' button
- 3) To view a file immediately, click it then press the 'View Hi-lited' button
- 4) The 'Start' button starts the extract process (not used for viewing a file)
- 5) To delete a single entry in the 'selected' list, click it then press Ctrl-D
- 6) Once the file has been extracted, you can start Windows File Manager
- 7) Change your archiver utility

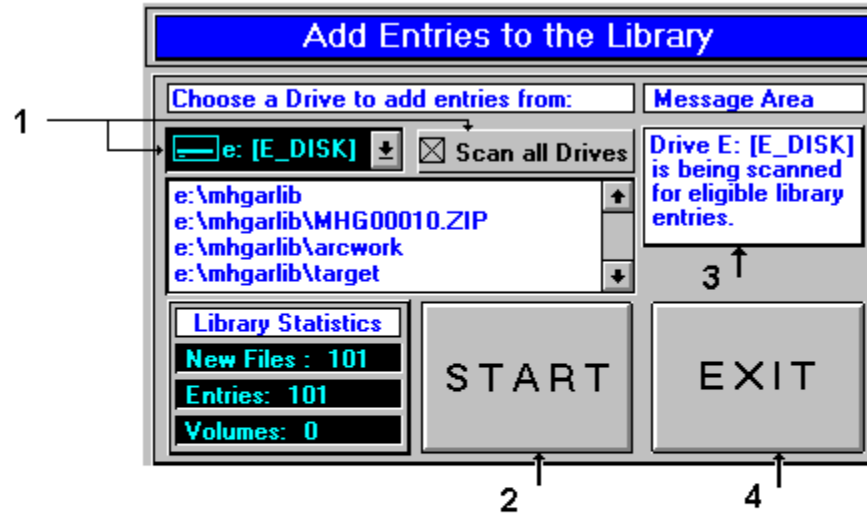
Additional Help:

[How to start extracting or viewing the contents of an archive](#)

[How to create a new archive](#)

How to add entries to the library

With this panel, you can start the process of adding entries to the library.



- 1) Choose a drive to add entries from, or scan all the drives on the disk
- 2) Start the process
- 3) Monitor the load process messages
- 4) Exit from this process

How To Register MHG*ARCLIB

With this panel, you can enter the registration information from the letter you received from me.

1 → Owner's Name: Marshall H. Goodman Software Ltd.

2 → Owner's Serial No.: 00000

3 → Registration No. from MHG Software Ltd.: 0

4 → Save and EXIT button

- 1) Enter your name from the letter received from M.H.G. Software Ltd.
- 2) Enter your serial number from the letter
- 3) Enter your registration number from the letter
- 4) Press the enter key or click on the 'Save and EXIT' button

So, how do you get a registration number? Well, send me a letter at the address below and include a cheque for \$25. Make sure you include your return address. I'll send you a registration letter by return mail with further instructions.

Send your letter and cheque to:



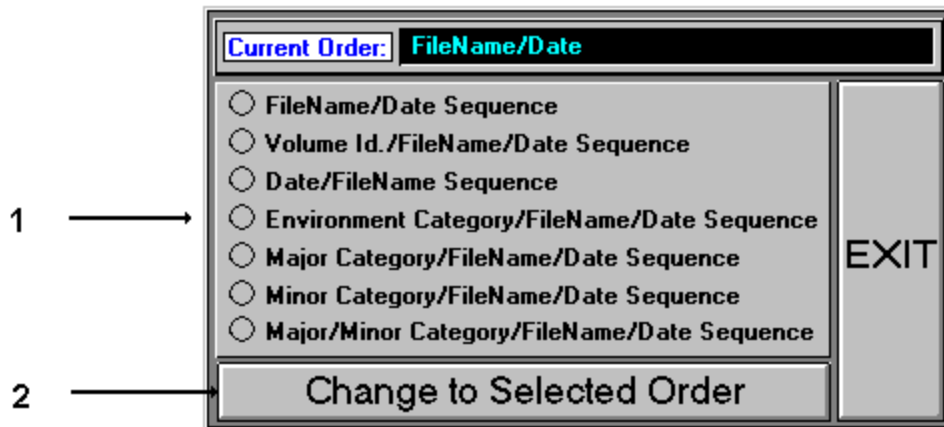
Thank you for using MHG*ARCLIB .

Additional Help:

[How to start registering MHG*ARCLIB](#)

How to change the library sort order or index

With this panel you can change the order that entries are displayed in the library list. If you are running a shareware version of MHG*ARCLIB, only the FileName/Date order is enabled. Registration brings access to all the sequences available on this panel.



- 1) Choose the new library order by clicking in one of the circles
- 2) Click on the 'Change to Selected..' button to actually change the order

Additional Help:

[How to start changing the library sort order or index](#)

How to search the library for entries

With this panel you can search the entries in the library by filename or search a string of text in the entry descriptions.

1) Enter the characters you want to search for in the filename or description

2) Click on the 'Find File' or 'Find Text' button to start searching

3) When you are done, click on 'Exit Search'

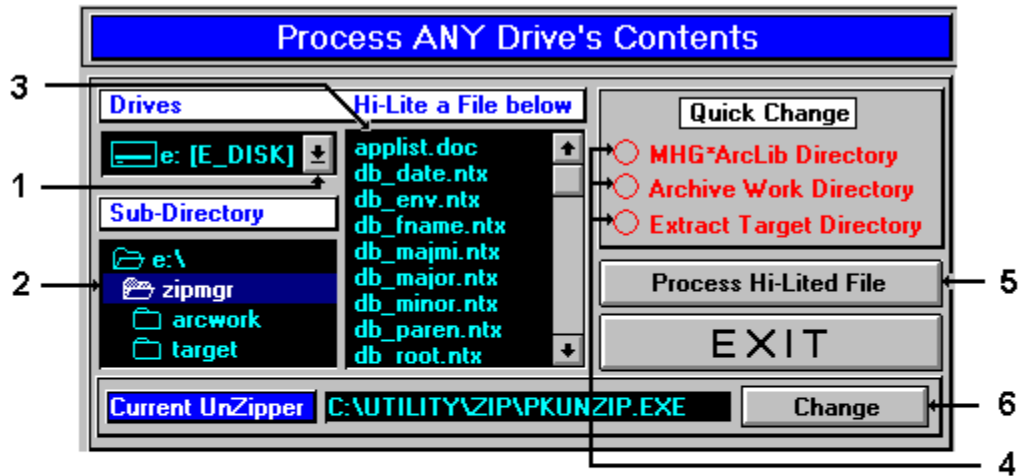
The image shows a vertical search panel with a grey background and a black border. At the top is a label 'Search For:' in yellow text on a blue background. Below it is a black rectangular text input field. Underneath the input field is a smaller, empty black rectangular box. Below that are three buttons stacked vertically: 'Find File', 'Find Text', and 'Exit Search'. Arrows from the numbered instructions on the left point to the input field, the 'Find File' button, the 'Find Text' button, and the 'Exit Search' button respectively.

Additional Help:

[How to start searching the library](#)

How to process an archive on any drive

With this panel you can view or extract the contents of an archive located anywhere on your hard drive or on a floppy diskette. These archives do not need to be entries in the library in order to be processed.



- 1) To choose a different drive, click on the Drives arrow and select a drive
- 2) To choose a different sub-directory, click on the Sub-Directory list
- 3) Then choose a file from the file list by clicking on it (which hi-lites it)
- 4) Click on a red circle under 'Quick Change' and you're there
- 5) Process the hi-lited file
- 6) Change the current archiver utility

Additional Help:

- [How to start processing an archive on any drive](#)
- [How to extract or view the contents of an archive](#)
- [How to create a new archive](#)
- [How to change your archiver utility](#)

MHG*ARCLIB Help - How To Start...

[How to start changing MHG*ARCLIB's startup options](#)

[How to start changing MHG*ARCLIB's configuration](#)

[How to start creating a new archive](#)

[How to start extracting or viewing the contents of an archive](#)

[How to start adding entries to the library](#)

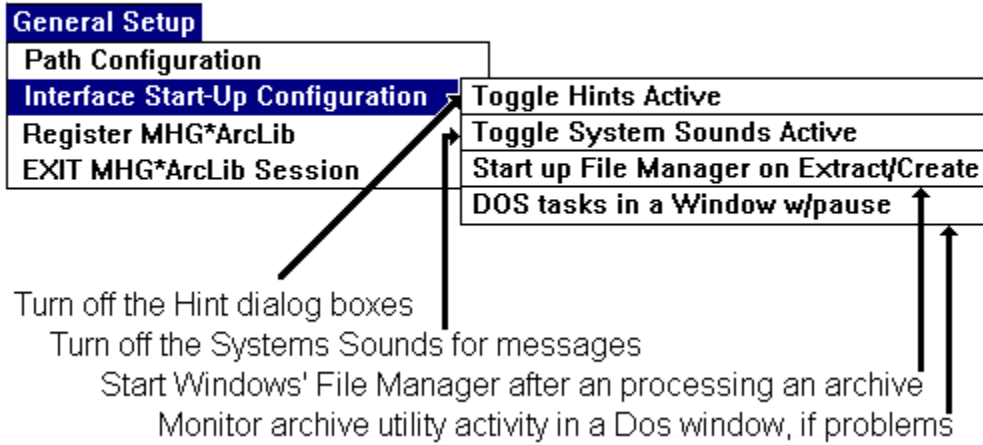
[How to start registering MHG*ARCLIB](#)

[How to start changing the library sort order or index](#)

[How to start searching for entries in the library](#)

[How to start processing an archive on any drive](#)

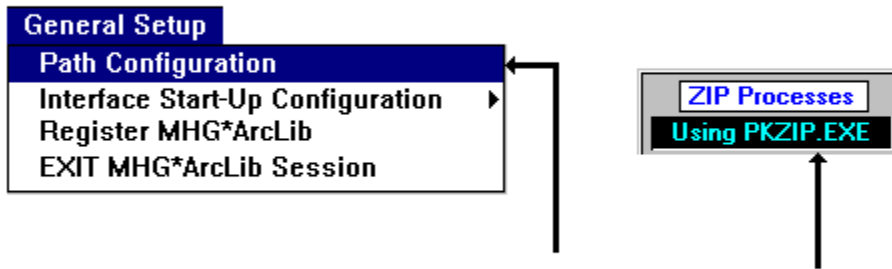
How to Start... Changing the Start-Up Configuration



Additional Help:

[How to start changing MHG*ARCLIB's configuration](#)

How To Start... Changing the program paths



Pull down the menu and click on 'Path Configuration' or double click on the 'Using..' label. You can also change the default archive utility.

Additional Help:

[How to change MHG*ARCLIB's configuration](#)

[How to start changing MHG*ARCLIB's startup options](#)

How to Start... Creating a new archive



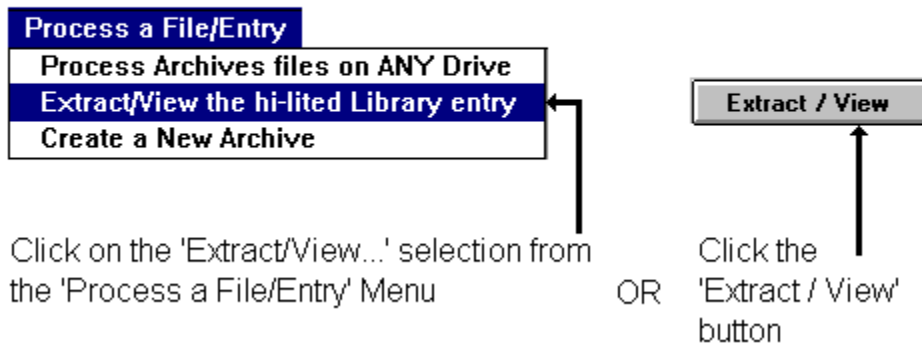
Click on the 'Create a New Archive' selection
from the Process a File/Entry Menu

Additional Help:

[How to create a new archive](#)

[How to start extracting or viewing the contents of an archive](#)

How to Start... Processing the hilited Library Entry

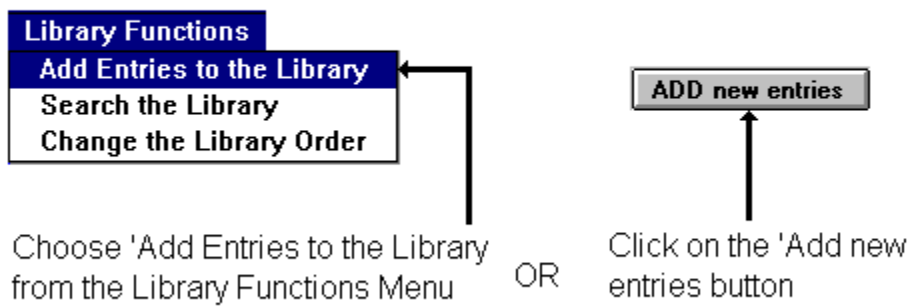


Additional Help:

[How to extract or view the contents of an archive](#)

[How to start creating a new archive](#)

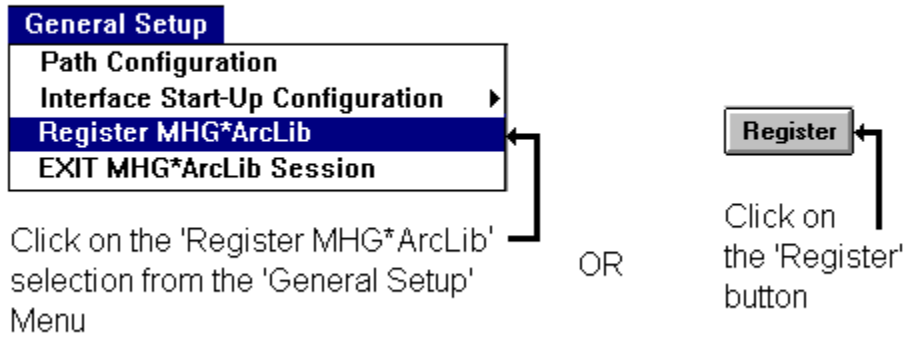
How to Start... Adding entries to the Library



Additional Help:

[How to add entries to the library](#)

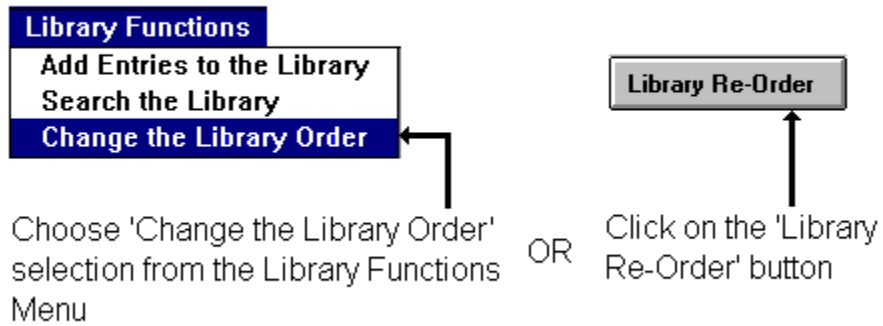
How to Start... Registering ZIPMGR



Additional Help:

[How to register MHG*ARCLIB](#)

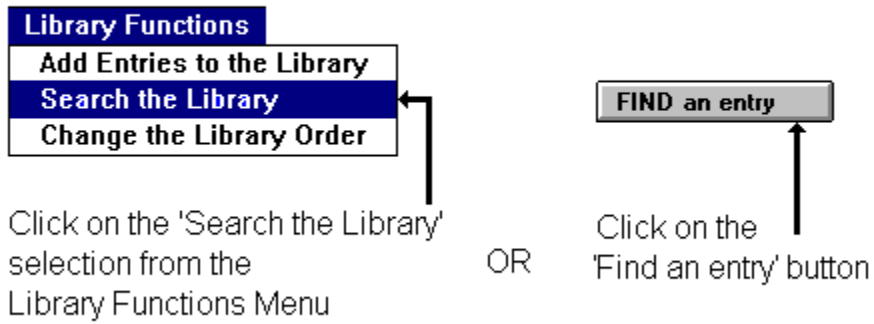
How to Start... Changing the order of the Library



Additional Help:

[How to change the library sort order or index](#)

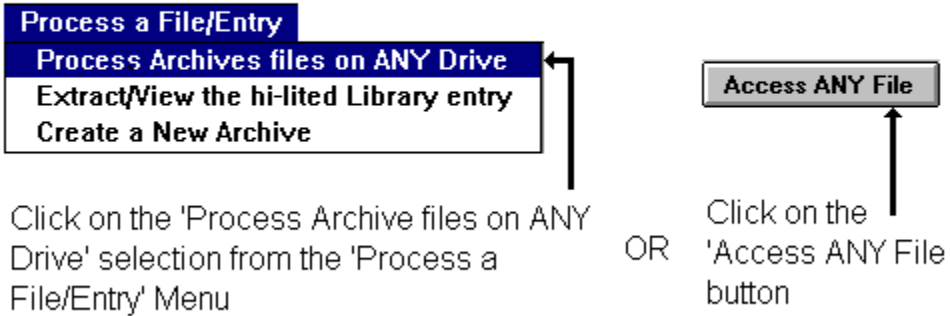
How to Start... Searching the Library



Additional Help:

[How to search for entries in the library](#)

How to Start... Processing an archive on any drive



Additional Help:

[How to process an archive on any drive](#)

[How to start extracting or viewing the contents of an archive](#)

MHG*ARCLIB Introduction

Hi, my name is Marshall and I am a professional programmer. I've been working with 'BASIC' programming of one flavour or another for over 15 years now. I discovered Visual Basic in 1990 and the program you are trying out is the result.

MHG*ARCLIB is an attempt to deliver a practical way to **process down-loaded files and access off-loaded archive files in a Microsoft Windows environment**. Anyone who needs to find an off-loaded file fast, then explore and use that archive's contents should consider this program.

If you are unfamiliar with these concepts and would like more information, click on this sentence.

If you want to look at a list of features of MHG*ARCLIB and then proceed to using the program, click on this sentence.

Why I wrote this program...



If you're here, then you want to know more about the processes that MHG*ARCLIB will help you to deal with.

I do a lot of bulletin board work, including scanning file directories and viewing the file upload list, selecting shareware files to down-load and retrieving messages from the different 'message bases' or conferences. I have acquired a lot of archive files of different types. I find that I have to off-load my hard-drive onto diskettes from time to time, to free up hard-disk space. I spend a substantial amount of time in my 'archive work' sub-directory, viewing archive documentation then extracting the programs and trying them out.

I'm a Windows user and I needed a Windows program or programs that would let me quickly find that 'off-loaded' archive file or allow me to process its' contents while in Windows, without shelling out to DOS.

Scanning File Directories

When you belong to a Bulletin Board System (BBS), you have access to archive files of programs, games, utilities etc., that are grouped by some common element, say they're all 'IBM' compatible. This main grouping can be called a **conference**, where you can usually also create and retrieve messages, called **mail**. Once you've joined a conference, you can locate archive files, usually grouped again, into **directories** each assigned a directory number. **File searches** usually allow you to limit a search based on a range of directory numbers.

File Upload List

When a file is received by a BBS in a process called **uploading**, the BBS system operator or **sysop** usually maintains an automatic system where the file is logged in, scanned for viruses and then assigned to a file directory in a conference. The log file the sysop maintains can be used to create a **new file upload list**. When you dial in to the BBS to download your mail, some sysops include this list in the **mail packet** that you receive. It can be used to determine if there are any programs or files that you want to down-load to your computer from that particular BBS.

Shareware

Shareware is a way of distributing a program to potential users in a **try before you buy** approach. A program author will distribute his program by uploading his file to a local bulletin board or a big commercial BBS like CompuServe. The file description that is associated with the file when you see it in the **new upload file list** is usually entered by the shareware author as part of the upload process. If a person downloads the file and tries it out, then he can **register** the program with the author and receive a benefit. This could be the unlocking of features in the program or being informed of version updates and being given a reduced price for the upgrade.

Archives

Archive files are files whose contents is a **compressed library** of associated files. They can be the components of a shareware program, the pages of a large document, a collection of gif files or pretty well anything. The archive's **compression type** is determined by the **archive utility** used to create it. The contents of these archive files is available using the same archive utility to **extract** the files. The main reason to use archiver utilities is that they make the archive file smaller in size than the all the files that make it up, so when you: transmit the file to a BBS, it **takes less time**; to store the file for backup, it **takes less space** on a storage device.

Shelling Out to DOS

Most archiver utilities run in the DOS environment. When you invoke an archiver in a DOS window under Microsoft Windows, the process is called **shelling out to DOS**. What happens is that Windows creates a DOS environment window and gives control there to the program that you want to run. The program executes and if the process is well written, it will issue an 'exit' command which closes the window. Control usually passes back to Windows' Program Manager.

Conferences

Most BBS's organize interest areas by computer type, as well as industry specific areas such as construction or education. You access a conference by 'joining it'.

What is an 'Archive Manager' Front-End....



There are many different archive types, such as ZIP, ZOO, ARC, PAK, ARJ, and LZH, to name a few. When you start working with the archive utilities to process these archives, you need to remember the different commands and options for each one. An 'archive manager front-end' allows you to deal with these different archives in a easy way, without having to remember all the commands and options.

What you need to know, to process an archive, is the following:

- What you want to do with the archive (Extract, View, or Create)

- Where the archive is located or where the files to make a new archive are located;

- Where to put the result of what you do;

A good archive manager front-end hides the complexity of dealing with so many different archive formats and lets you work with any archive easily.

Library Database



A 'Library Database' is a mechanism that allows you to quickly store and retrieve information about archived files, stored as entries in the library. The most important information is **where** the archive file can be found. If you have off-loaded archive files to diskettes and listed the files on the outside label or piece of paper in the diskette sleeve, then you have a manual archive library.

If you have an additional list with each archive's description on it, then you can answer the next important question: **what archives do I have that can ...?** With your list, you can scan the archive descriptions for the answer.

A computer-based library can answer these questions and more: **Show me all the entries for Windows resource utilities...** and **Find all entries that have 'extract' and 'zip' in their file description** for example. It can also load this data from your diskettes automatically and lets you access it in an easy way.

MHG*ARCLIB Features



- . All facilities available from **button controls** or **pull-down menus**.
- . Contextual **help** via the Microsoft Help Engine.
- . Windows **Database Engine (vxBase)** for Visual Basic from Terry Orletsky, whose address is: #488, 9707-110th Street, Edmonton, Alberta, CANADA, T5K 2L9 phone: (403) 488-8100.
- . Custom designed backgrounds using Windows Paint.
- . Easy library **loading process** from any drive.
- . Easily make or assign the expected sub-directory paths.
- . MHG*ARCLIB handles **6 different formats** when registered.
 - Only ZIP format is supported in shareware version.
- . Archive file headers are extracted **without shelling to DOS**.
- . **Shells out to DOS** for extracting files from archives or creating archives.
- . **Different archive utilities** can be assigned for extraction and creation.
- . **Selective extraction** of files in an archive.
- . MHG*ARCLIB **indexed on 6 different field combinations** when registered.
 - Indexed on Filename/Date only in shareware version.
- . **Unlimited entries in the database** when registered.
 - Limited to 20 different volume-ids in the shareware version.
- . **Environment and Category** assignment in the database is made easy with pull-down list boxes whose contents can be modified.
- . **File descriptions** easily added or modified using a scrollable text box.

One last thing...

In order for MHG*ARCLIB to operate correctly, you should set up the **default archive utility**.

Doing this right away will let you start using MHG*ARCLIB without any further adjustments.

[Help on Path Configuration](#)
[MHG*ARCLIB](#)

[Alt-F4 exits to](#)



